

## 2023 FULL CATALOGUE

OPERA  
SYSTEM



Ray



MEDIT



Ray



GoodDrs  
Dr's Cam Air



SHINING 3D  
DENTAL



INNOVATIVE SOLUTIONS FOR DIGITAL DENTISTRY

INNO  
CLAB



INNO  
SMILE



INNO  
GUIDE



tel. 1800 89 87 49  
address. 201/15-17 Park Street  
South Melbourne, VIC 3205  
email. info@innodent.com.au  
website. www.innodent.com.au



# INNOSMILE

Design your  
perfect SMILE  
with us.

## We are Different

### Less Attachments

We design Clear Aligner aesthetically without using any excessive attachments to reduce discomfort caused by foreign body in the mouth.

### Minimize Pain

We design 3 types of thickness; soft, medium and hard Clear Aligners at each stage which minimize pain during correction.

### Maximum Effects

We focus on designing by patient's chief complaints or feedbacks to allow you to see the maximum effects with minimum cost.

### Flexibility

We fabricate Clear Aligner every 12-14 weeks to do other dental treatment if necessary, during correction.

## INNOSMILE Clear Aligner is...



PREMIUM  
QUALITY



AUSTRALIAN  
MADE



MONEY  
SAVING

## Smile Makeover Cases

Our smile makeover cases are treated professionally, **without attachment.**





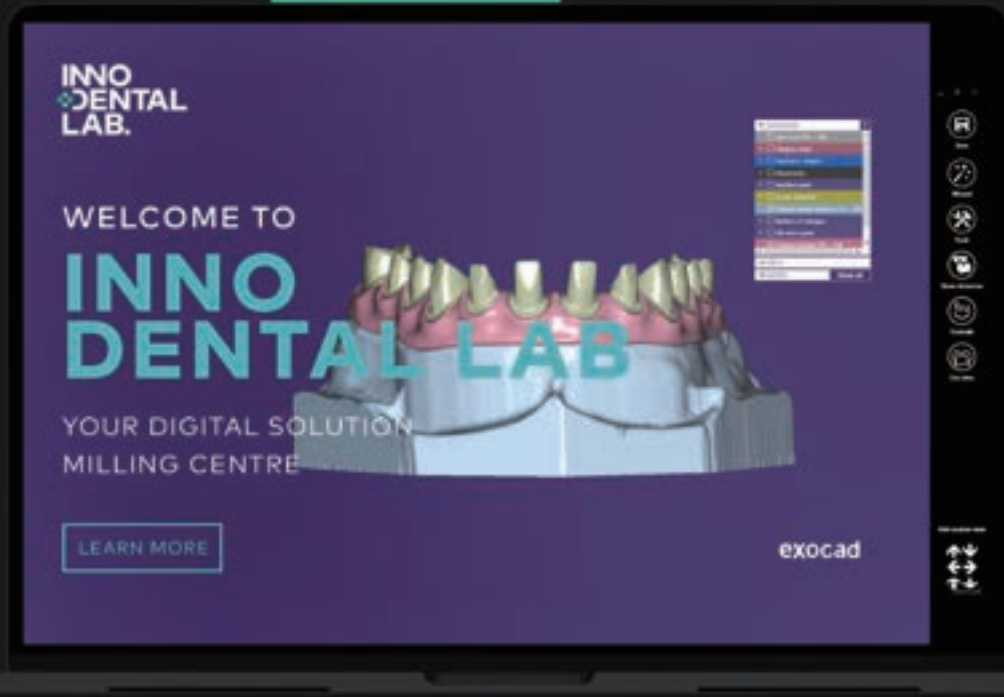
# INNO DENTAL LAB

Premium Laboratory for 'Digital Dentistry'

/  
Decades of  
experience

/  
Professional knowledge  
of CAD/CAM

/  
Wide range of  
products



The latest CAD/CAM technology  
and equipment in our laboratory



Digital Smile Design



Implant Crown



Full Arch Restoration



Surgical Guide



100% Australian made using superior and TGA approved materials. All our product are backed by 10 years warranty.



tel. 1800 089 570

address. 201/15-17 Park Street

South Melbourne, VIC 3205

email. info@innodentallab.com.au

website. www.innodentallab.com.au





# BIO<sup>TEM</sup> DENTAL IMPLANT SYSTEM

## AR SYSTEM

As submerged implant with the internal hex structure, the implant with the improved initial fixation strength in the soft bone by applying the small thread at the upper part



### Single Pitch Macro Thread

- 0.7 pitch x 0.15 depth x double lead
- Synchronized thread
- Optimized design for (StLA/RBM) surface
- Reinforce fixture strength

### Taper degree 1.5°

- Easy to get initial stability in soft bone

### Helix Cutting Edge

- Powerful self threading
- Easy path change



### Morse Tapered connection 11°

- The Fixture & Abutment interface ensures hermetic sealing
- This distributes the load to the fixture evenly. Therefore, it minimized bone loss.

### Corkscrew Thread

- 0.7 pitch x 0.35 depth x double lead
- Powerful self threading
- Keep implant path
- Easy to change the path
- High initial stability
- Decrease sensitivity on drill size

### Apical

- Self-drilling ability
- Increased initial stability at fresh extraction socket

\* SURGICAL GUIDE AVAILABLE



# Medifuge CGF

## Blood Phase Separator

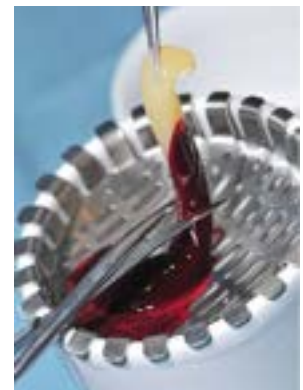
The medical device MEDIFUGE CGF allows for the use of up to 8 test tubes for the creation of CGF (fibrin);



“CGF efficacy has been so far demonstrated in oral and maxillofacial surgery, in maxillary sinus lift procedure and profile ridge augmentation.”

### Area of use

- Orthopedic surgery;
- Maxillo facial surgery;
- Oral surgery;
- Ophthalmology;
- Cosmetic surgery;
- Sport medicine;
- Dermatology;
- Gynecology;
- Neurosurgery.



### Additional Option

## Sticky Bone Box





# SURGYBONE PIEZOELECTRIC

## Ultrasonic Bone Surgery System

Surgybone aims at satisfying doctors' everyday need, including the need to exploit room space at best. Thanks to its extreme versatility, selecting the ENDOS programme, the device can be turned into a highly performing ultrasound equipment. User-friendly, always ready for use, **Surgybone exploits piezoelectric technology at 360°** with a single handpiece.



High-power handpiece with internal spray



Pump with easy insertion of the irrigation set



Dynamometric wrench



Pneumatic footswitch



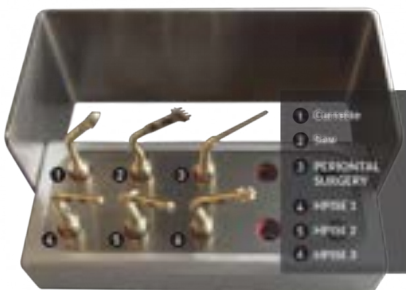
DI IM: Irrigation pipe



Surgical tray



Kit with 6 insert tips (5 sharp, 1 smoothing)



### 6 Insert Tips

1. Bone scrapig & Bone grafting
2. Ridge split & Wisdom tooth Extraction
3. Periodontal surgery
4. Sinus lifting 1st
5. Sinus lifting 2st & Lateral window opening (Stopper)
6. Crestal approach sinus lifting

**FREE  
GIFT**



**Pf. Sohn's tips**

**Valued At \$1,100 + GST**

- 4 Tips





# BiLumix

GENERATION 2.0

## Shadowless Headlamp



# BRIGHT CHOICE

For any procedure to illuminate an area via a unique, dual light source that eliminates any shadow



**Weightless**  
Light and Sturdy

No pressure or added weight on the nose. Contoured to fit snugly on the head for a comfortable wear all day long.



**Shadowless**  
Dual Lights

Two LED light sources deliver a strong spotlight in angles that eliminate any shadow from a first person POV.



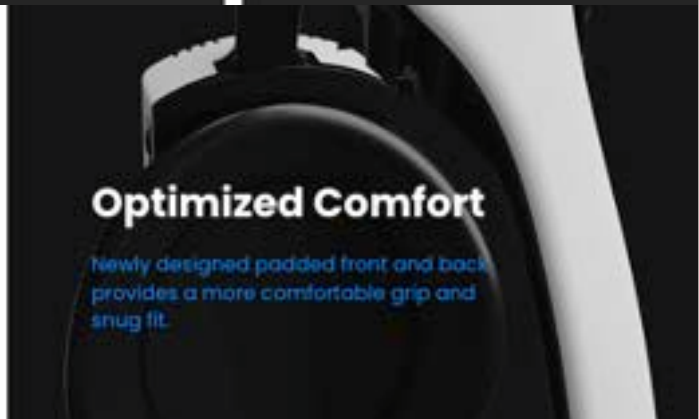
**Wireless**  
Two Rechargeable Batteries

An enhanced power management system along with two rechargeable batteries allow you to work continuously for up to 12 hours.



**Ergonomic Design**

Adjustable band and front pad allows BiLumix headlamp to fit just right for your head.



**Optimized Comfort**

Newly designed padded front and back provides a more comfortable grip and snug fit.



## First Look at the Medit i700

Medit i700 makes the scanning experience a comfortable one for both the dentist and patient. With both powerful hardware and intelligent software, the full-feature Medit i700 is the key to unleash your clinic's full potential.

### Specifications

Category	Medit i700	
Scanning technology	Scanning frame	Up to 70 FPS
	Imaging technology	3D-in-motion video technology 3D full color streaming capture
	Light source	LED
	Anti-fogging technology	Adaptive anti-fogging
Accuracy	Full-arch	10.9µm ± 0.98
Handpiece	Dimensions	248 x 44 x 47.4 mm
	Weight	245 g
Tip	Tip size	22.2 x 15.9 mm





## Scan & Communicate

### Smart Scan Filtering



Remove unnecessary soft tissue data which is one of the biggest challenges when performing scans.

### Medit Ortho Simulation



Help the patient visualize potential results of an orthodontic treatment.

### Medit Smile Design



Show the patient their future smile or help them envision a braces treatment.

## Treatment Types

### Margin Line Creation



Choose between allowing the system to automatically generate the margin line for any tooth or create it manually.

### Denture Scanning



Scan edentulous patients, or the inner surface of the denture. Use wax rims or dentures to perform occlusal alignment.

### A.I. Scanbody & Abutment matchig



Abutments and scan bodies are automatically matched and aligned with the scan data. Use this function for downstream work such as CAD.

### Category

### Medit i700

Tip	Mirror angle	45-degree angle (Easier to scan distal molar area)
	Scan area	15 x 13 mm
	Autoclavable	Up to 100 times Autoclave 121°C 30 mins   Autoclave 134°C 4 mins
	Reversible Tip	Yes
Special mode	Remote control mode	Yes
	UV-C disinfection	Yes
Cable	Length	2.0 m / Handpiece Detachable
	Connectivity	USB 3.1 Gen1 (C Power Delivery)



 **SHINING 3D**

**AccuFab-L4D**

Large-format Dental 3D Printer

**FabCure 2**

Post-curing Unit  
Fabulous Curing



## 3D PRINTER PACKAGE

Request a quotation

- Shining AccuFab-L4D 3D Printer
- FabCure 2
- Twin Tornado Washer
- Model Resin (1 X Bottle: 1L)

**Twin Tornado  
Washer**

Double Power & Efficient





## MILLING MACHINE

# Element

DRY MILLING 5 AXIS

Optimize your digital workflow, enjoy maximum freedom and achieve optimal results.



NO COMPRESSED AIR



5 AXIS



1 BLANK



6 BLOCKS



17 TOOLS



DRY

## HIGH MACHINING SPEED FOR A PERFECT RESULT

- Disc thickness up to 40 mm
- 5 axis dry milling
- Optimal use of blanks
- Automatic tool changer 17 tools
- Option: 6 blocks holder
- Color coded tools







World's 1st 3D printed direct aligner

# Direct Aligner (TC-85DAC)



The world's first 3D Printing Direct Aligner material (i.e. TC-85DAC) introduced by Graphy is an innovative material that breaks the stereotype of clear aligner so far and moves Digital Dentistry forward.

It is a material that can be optimized customizing for each patient and each step through various thicknesses printouts from the minimum size of 0.3mm according to the treatment plan and maximize the advantage of 3D printing.

The shape memory function allows patient to feel flexible and comfortable fit when wearing the aligner and the movement of the teeth can be effectively controlled after wearing.

Dental model printing is not necessary compared to the manufacturing method of the conventional clear aligner and since handwork such as thermoforming, cutting and finishing are not required, there is almost no manufacturing error occurred during the manufacturing process and manufacturing time and cost can be reduced.

Properties	Unit	TC-85DAC	Remark
Color	-	Clear	
Density	g/cm <sup>3</sup> @ 25 °C	1.061 ± 0.02	
Viscosity	cps @ 25 °C	500 ± 100	BrookField
Solid content	% @ 80 °C x 1h	≥ 98	
Shore Hardness (D)	-	≥ 85	
Flexural Strength	Mpa	≥ 65	ISO 20795-2
Flexural Modulus	Mpa	≥ 1500	ISO 20795-2





World's 1st 3D printed direct aligner

## Shape Memory

### Minimize inconvenience of wearing and removing through shape memory function

The softening action of direct aligner in warm water makes patient's inconvenience of wearing and removing even the minimized block out makes the patients uncomfortable.

### Enhancement of orthodontic force through shape memory function

Minimized block out of direct aligner can prove the maximum orthodontic force using shape memory function.

### The recovering of orthodontic force through shape memory function

In case of Direct Aligner, when you feel its orthodontics force and elasticity decreasing, simply deep in the warm water and then recovered its the orthodontic force of the original form.

### Heat disinfection is available

In case of thermoforming materials, it is completely deformed in hot water.

However, in case of Direct Aligner, even if it is contaminated by a long time usage and FOB(foreign object debris), through Heat disinfection under 100°C, it can recover a clean state and also its original shape and mechanical property.

### Convenience of Storage

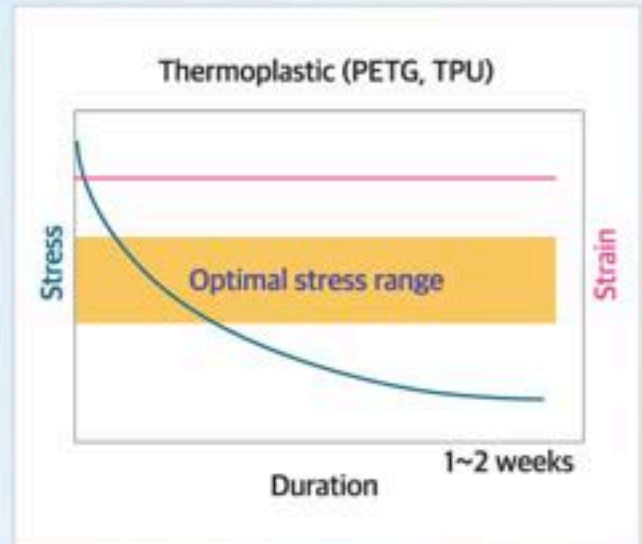
Since shape memory function and simple heat disinfection are available, the extra exclusive case for containing is not necessary.

You are able to directly insert it in your mouth after disinfection in warm water and using shape memory function instead of storing it in a exclusive case after removed the aligner (e.g. Eating).

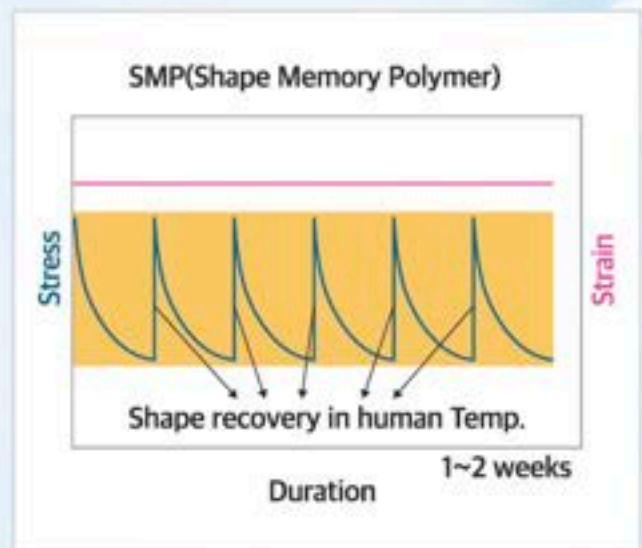
### Perfect Transparency

Graphy always aim at making 100% transparency material. You may not realize that wearing 3D Printed Direct Aligner or not because of the 100% transparency. Direct Aligner are strong from discoloring and easily recovering its transparency by simply brushing it with toothpaste while existing materials are weak for discoloring and never make its color recovered.

## Aligner-Stress Relaxation



VS





World's 1st 3D printed direct aligner

# Surgical Guide (SG-100)



Tera Harz SG(i.e. SG-100) perfectly implement the designed shape, enabling accurate drilling at the angle and depth intended by the operator.

Implant Surgical Guide produced by SG-100 is characterized by accurate and firm guide hole even without the use of metal sleeve.

Since HDT(Heat Distortion Temperature) is over 130°C, sterilization through autoclave is possible. Adjust the transparency of Surgical Guide is also possible through the post-processing method.

Properties	Unit	SG-100	Remark
Color	-	Clear	
Density	g/cm <sup>3</sup> @ 25 °C	1.110 ± 0.02	
Viscosity	cps @ 25 °C	500 ± 30	BrookField
Solid content	% @ 80 °C x 1h	≥ 98	
Shore Hardness (D)	-	≥ 90	
Flexural Strength	Mpa	≥ 110	ASTM D790
Flexural Modulus	Mpa	≥ 2500	ASTM D790
Tensile Strength	Mpa	≥ 60	ASTM D638
Tensile Modulus	Mpa	≥ 2500	ASTM D638
Elongation	%	≤ 10	ASTM D638
Impact strength	J/m <sup>2</sup>	≥ 3000	ASTM D256 (Notched)



World's 1st 3D printed direct aligner

# Flexible Denture (TFDH)



Tera Harz Flexible Denture (i.e TFDH) is a resin for producing Flexible Partial Denture Base, without change in strength due to low moisture absorption.

If it is used with Denture Teeth produced by TC-80DP (Graphy Permanent C&B resin), you can secure world-class strength, stability, and aesthetics.

Properties	Unit	TFDH	Remark
Color	-	Magenta	
Density	g/cm <sup>3</sup> @ 25 °C	0.998 ± 0.02	
Viscosity	cps @ 25 °C	200 ± 50	BrookField
Solid content	% @ 80 °C x 1h	≥ 98	
Shore Hardness (D)	-	≥ 80	
Flexural Strength	Mpa	≥ 110	ISO 20795-1
Flexural Modulus	Mpa	≥ 2800	ISO 20795-1





# Model (S-100M)



Among 3D printing materials, the most common and used for a long time in the digital dentistry market are dental model material. Graphy Dental Model (i.e. S-100M) enables precise and easy reproduction of oral data acquired through the Intra Oral Scanner. It reduces the time and cost of producing dental model and helps to accurately reproduce the oral environment.

Properties	Unit	S-100M	Remark
Color	-	Gray-Beige	
Density	g/cm <sup>3</sup> @ 25 °C	1.110 ± 0.02	
Viscosity	cps @ 25 °C	500 ± 30	BrookField
Solid content	% @ 80 °C x 1h	≥ 98	
Shore Hardness (D)	-	≥ 90	
Flexural Strength	Mpa	≥ 110	ASTM D790
Flexural Modulus	Mpa	≥ 2500	ASTM D790
Tensile Strength	Mpa	≥ 60	ASTM D638
Tensile Modulus	Mpa	≥ 2500	ASTM D638
Elongation	%	≤ 10	ASTM D638
Impact strength	J/m <sup>2</sup>	≥ 3000	ASTM D256 (Notched)





DentalCAD / ChairsideCAD

# Powered by Passion Executed in Excellence





**Implant Module**  
Design abutments and screw-retained bridges.



**Bar Module**  
Advanced bar design for both standard and complex bars.



**Model Creator**  
Create physical models from digital impression scans.



**Bite Splint Module**  
Design night guards, bite splints and simple appliances.



**Provisional Module**  
Create eggshell temporaries based on pre-op scans.



**PartialCAD**  
Design removable partial denture frameworks.



**FullDenture Module**  
Digital design of full dentures.



**TruSmile Module**  
Realistic rendering of dental restorations.



**Virtual Articulator**  
Simulate jaw movement and analyze dynamic occlusion.



**Jaw Motion Import**  
Import jaw measurement from devices.



**DICOM Viewer**  
Visualize voxel CT data during the design process.



**Smile Creator**  
Next generation smile design : the best of 2D and 3D.



**Tooth Library**  
Extensive library of beautiful natural teeth.

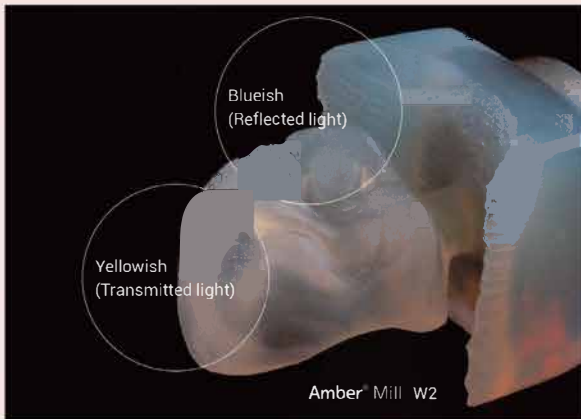
## Bundle List and Add-on Modules (Perpetual and Rental are available)

	Advance Bundle	Implant Bundle	Ultimate Bundle
Implant		○	○
Virtual Articulator	○	○	○
Jaw Motion Import			○
Bar		○	○
Model Creator			○
Smile Creator			○
Provisional	○	○	○
DICOM Viewer		○	○
Bite Splint			○
Tru Smile	○	○	○
Full Denture			○
Partial CAD			○
ZRS Tooth Library	○	○	○



New Frontier of Lithium Disilicate-Based CAD/CAM Blocks & Disks

# Amber<sup>®</sup> Mill



## Indications

-  Inlays
-  Onlays
-  Veneers
-  Posterior Single Crowns
-  Anterior Single Crowns
-  3-Unit Bridge  
\*up to the second Premolar

## Available Shades

	A1	A2	A3	A3.5	B1	B2	B3	B4	C1	C2	C3	C4	D2	D3	D4	W1	W2	W3	W4
HT	[Swatch]	[Swatch]	[Swatch]	[Swatch]	[Swatch]	[Swatch]	[Swatch]	[Swatch]	[Swatch]	[Swatch]	[Swatch]	[Swatch]	[Swatch]	[Swatch]	[Swatch]	[Swatch]	[Swatch]	[Swatch]	[Swatch]
MT	[Swatch]	[Swatch]	[Swatch]	[Swatch]	[Swatch]	[Swatch]	[Swatch]	[Swatch]	[Swatch]	[Swatch]	[Swatch]	[Swatch]	[Swatch]	[Swatch]	[Swatch]	[Swatch]	[Swatch]	[Swatch]	[Swatch]
LT	[Swatch]	[Swatch]	[Swatch]	[Swatch]	[Swatch]	[Swatch]	[Swatch]	[Swatch]	[Swatch]	[Swatch]	[Swatch]	[Swatch]	[Swatch]	[Swatch]	[Swatch]	[Swatch]	[Swatch]	[Swatch]	[Swatch]
MO	[Swatch]	[Swatch]	[Swatch]	[Swatch]	[Swatch]	[Swatch]	[Swatch]	[Swatch]	[Swatch]	[Swatch]	[Swatch]	[Swatch]	[Swatch]	[Swatch]	[Swatch]	[Swatch]	[Swatch]	[Swatch]	[Swatch]









All Ceramic Materials for All-Ceramic Restorations

Lithium Disilicate-Based Press Ingots

# Amber<sup>®</sup> Press

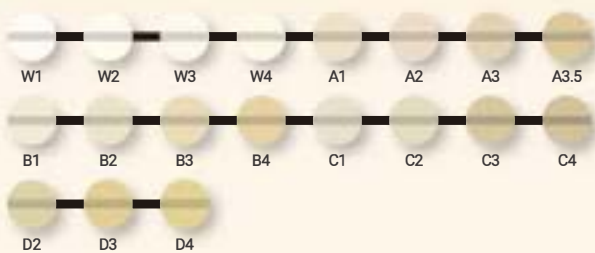


## Indications

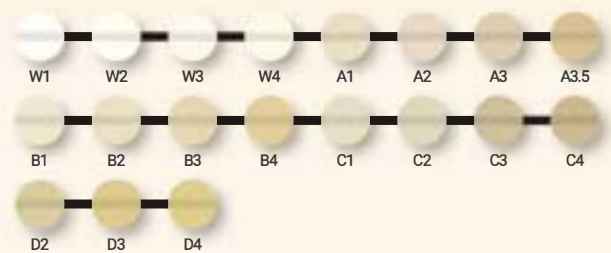
-  Inlays
-  Onlays
-  Veneers
-  Anterior Single Crowns
-  Posterior Single Crowns
-  3-Unit Bridge  
\*up to the second Premolar

## Diverse Shade Option

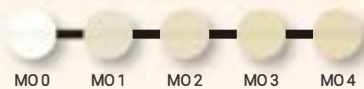
### HT(High Translucency)



### LT(Low Translucency)



### MO(Medium Opacity)



Amber<sup>®</sup>Press provides three levels of translucency and over 43 shades overall. It will make any restoration come to life.








DCI edge

**MAPLE 62U (UP MOUNTED)  
& MAPLE 62D (DOWN MOUNTED)**

**More Accurate Motions  
with Easier Operation**

Optimum work conditions for assistant makes your practice more productive.



 Ergonomic Design	 Triple-Axis-Movable LED Operating Light	 Self-Cleaning Cuspidor
 Water Purification System	 Safety Control Switch	



Hydraulic Driver System



Balance arm



Assistant Set



**Runyes®**  
FOCUS ON DENTAL

**DC Wall Mounted  
X-Ray Unit**



The Exposure Time was Reduced by 30%



The Excess Rays were Reduced by 90%



Imaging Quality Improved by 120%



Ergonomic Design



Strong Power Adaptability



Components Imported from Japan

**Technology Parameters**

<b>Power Voltage:</b> AC 110-240V	<b>Bulb Tube:</b> CANON D-045	<b>Duty Cycle:</b> 1/30
<b>Frequency:</b> 50/60Hz	<b>Ray Focal Spot:</b> 0.4mm	<b>Half Value Layer:</b> 65Kv
<b>Maximum Power:</b> 1100VA	<b>Bulb Tube Voltage:</b> 65KV ± 10%	<b>Inherent Filtration:</b> ≥2.1mm Al
<b>Current:</b> 5A	<b>Anode Current:</b> 7mA ± 20%	<b>Leakage Radiation:</b> 1meter ≤ 0.14mGy/h
<b>Fuse:</b> 10A	<b>Anode Angle:</b> 12.5°	<b>Time Of Exposure:</b> 0.01—2.0s



**Runyes®**  
FOCUS ON DENTAL  
**SEA SERIES  
AUTOCLAVES**



Capacity	23L	29L	45L
----------	-----	-----	-----



**Features**



Touch Screen



Automatic Cleaning Feature



Rapid USB Ports



Electronic Door Protection



Motorola Transducers



**Runyes®**  
FOCUS ON DENTAL  
**DENTAL SUCTION  
SYSTEM**



Item	Technical parameter		
Available For Use	1 dental unit	5 dental units	8 dental units
Use Simultaneously	1 unit	3 units	6 units
Suction Efficiency	300L/min	900L/min	1500L/min
Noise	50DB	59DB	61DB
Motor Power	550W	630W	1300W
Motor Speed	3440 rpm	3980 rpm	3740 rpm

**Runyes®**  
FOCUS ON DENTAL  
**DENTAL OIL-FREE  
AIR COMPRESSOR**

Oil-free Technology | Powerful & Quiet



- Low Noise
- Oil-free Compression
- Cylindrical Vent
- Dual Overload Protection Safer to Use
- Triple Filtration Device



Pump Quantity	Matchable dental chairs	Rating Power	Gas tank volume	0.4Mpa Displacement	Max pressure	Rotating Speed	Noise
Single head	One for one	0.6	25	50	0.8	1400	60
Double head	One for two	1.2	50	100	0.8	1400	60
Double head	One for three	1.54	60	140	0.8	1400	60
Three heads	One for five	2.2	70	210	0.8	1400	65
Four heads	One for eight	3.1	135	280	0.8	1400	65
Six heads	One for twelve	4.7	210	420	0.8	1400	67



## 01 Visible X-ray Guide

The user can conveniently adjust the FOV according to the purpose of the treatment

## 02 Image Processing Technology

70 $\mu$ m voxel size (4cm diameter) and 6 second reconstruction time (16cm diameter)

## 03 Specialized for Endodontic Procedures

- Voxel size: 70 $\mu$ m
- Minimum FOV: 4x3cm

## 04 Fast Scan View a CT Image in Less than 10 Seconds

- Ideal for immediate implant placement validation
- Scan time: 4.9 seconds
- Reconstruction time: 4 seconds
- More accurate, faster, and lower dose than a panoramic acquisition

## 05 One Shot Ceph

- Fast acquisition to reduce patient movement and image distortion
- Minimize patient dose with a 0.3 second exposure

## 06 Panoramic

The state of the art technology for high-definition, image quality

## 07 Wireless Remote Control

Non-directional wireless remote control facilitates your patient positioning easier than ever

## 08 Various Options for Your Practice

- 13x10cm or 16x10cm maximum FOV options
- 3 different cephalometry options including One Shot Ceph

## & Rayguard Protection

Real-time monitoring to ensure optimal functionality





RAYSCAN (Alpha) changed a trend of dental imaging system by proving its reliability and robustness with the highest level of diagnostic efficiency.



### CBCT

Up to 70µm Scan mode for endodontics.



### Panoramic

The state of the art technology for high-definition image quality.

## Technical Specifications

RAYSCAN α			
Type	Panoramic, Cephalometric, Cone Beam CT		
Patient positioning	Standing (wheelchair accessible)		
Focal spot	0.5mm		
Tube voltage	60~90kVp		
Tube current	4~17mA		
Weight	RAYSCAN α -P & 3D: 150kg (±10%) / RAYSCAN α -SC & SM3D: 177.5kg (±10%)		
	CBCT	Panoramic	Cephalometric (Scan type)
Detector type	CMOS	CMOS	CdTe
F.O.V	10x10cm, 16x10cm	-	Max. 26x24cm
Voxel size (CT)	0.143~0.286mm <sup>3</sup>	-	-
Scan time	14sec	Max. 14sec	Min. 4.0sec





# RAYFace

One-shot 3D Face Scanner

Captures a patient's  
most Natural Smile  
in a moment

## Expanded realm of treatment possibilities

Utilize it in various treatment areas, cosmetic dentistry, dentures, splints, clear aligners...etc.



Diagnosis

Communication



## Auto Alignment



Superimpose patient's intra-oral scan data, 3D facial scan data, and CT data with only two mouse clicks.

## Effective Communication Tool

for Clinicians, patients, and technicians

### Accurate Treatment plan

*Presenting a treatment plan fits the best to the patient's facial features.*

### Excellent Communication

Effective consultation through comparison of realistic before and after images.

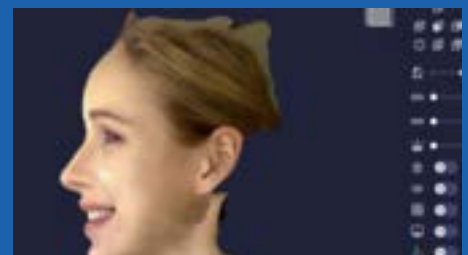
### Open system

Precise automatic alignment with intraoral scan data.

### Outstanding Image quality

Acquire high quality 3D face scan data from High-resolution cameras.

## Preview





## RIO Scan – PSP Scanner

- Touch Screen with Preview Function
- Stand-alone device connected to local network
- Reasonable Price including installation
- Two of Size 0 and Two of Size 2 will be provided

Phosphor Plate Scanner



### Specifications

RIO Scan Specifications	Standard package	Occlusal kit
Image plate size	Size 0~Size 3	Size 4
Resolution (Theoretical)	SHR 21 lp/mm HR 16 lp/mm HS 9 lp/mm	
Gray scale	14 bit	
Display	4.3" Touch screen	
Connection	Ethernet	
Dimension	170(W) X 260(H) X 278(D) mm	
Weight	Approx. 3.5 kg	
Power supply	100-240 V~, 1.5 A, 50-60 Hz, (24 VDC Adapter, 2.5 A)	

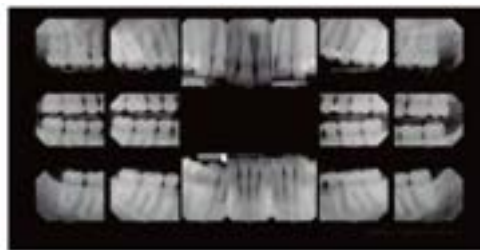


## RIO Sensor – Intra Oral Scanner

- Ergonomic design
- Plug and Use
- Durability



### Intra Oral Sensor



## Specifications

RIS500 Specifications	Size 1	Size 2
Outside dimensions	39x25mm	42x30mm
Imaging area	30x20mm	34x26mm
Pixel size	20x20µm	20x20µm
Sensor Technology	Advanced CMOS with Optical fiber	Advanced CMOS with Optical fiber
Scintillator	CsI.	CsI.
Number of pixels	1.5 Megapixels	2.2 Megapixels
Image resolution	25lp/mm	25lp/mm
Connection	USB 2.0 high speed	USB 2.0 high speed
Cable length	2 meters	2 meters



### Intra Oral Camera

## Dr's Cam Air

Wireless AutoFocus Intraoral Camera with Mouse

 ENJOY  
WIRELESS



### Curing Light

## Dr's Light Clever

Incomparable Dual Wave Light Quality



#### Features of Dr's Cam Air

- |   |   |
|---|---|
|  High speed digital wireless            |  Wireless mouse            |
|  Macro to Full arch                     |  OLED screen               |
|  Auto Focus                             |  280° twist head           |
|  FHD image support                      |  Adjustable LED brightness |
|  A Simple selection and Easy connection |  3 Color Impressions       |
|  Infinite Channel                       |  Software compatibility    |
|  Real Plug and Play                     |  Twain driver              |
|  Mac Support                            |  Big capacity battery      |

#### Features of Dr's Light Clever

- |   |  |
|---|--|
|  Dual wavelength LED                                     |  |
|  Focused Light   |  |
|  Autoclaveable and interchangeable Guide-cap             |  |
|  4 curing light modes                                    |  |
|  Time setting available (Softstart is fixed for 20 sec.) |  |
|  330° head twist and slim head                           |  |
|  Angled handpiece design                                 |  |
|  OLED screen   |  |
|  Interchangeable battery pack                            |  |
|  Big capacity battery                                    |  |





# Incomparable Dual Wave Light Quality

# Dr's Light Clever

## Features



### Dual wavelength LED

Usable all kinds of materials in the field with 405nm & 460nm peak wavelength LED.



### Focused light

Increase efficiency of light.



### Autoclaveable and interchangeable Guide-cap

Guide-cap is autoclaveable and interchangeable to prevent cross infection.



### 4 curing light modes

User can select High, Low, Softstart, Pulse mode as user wants.



### Time setting available (Softstart is fixed for 20 sec.)

User can select time setting as needs.



### 330° head twist and slim head

It makes easy to get approach into the oral.



### Angled handpiece design

Most familiar design for user.



### OLED screen

It shows device states on the OLED screen with clearly.



### Interchangeable battery pack

User can interchange the battery easy. (Doesn't need to send device to factory to change the battery)

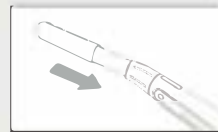


### Big capacity battery

Big capacity battery makes long time use.



330° head twist and slim head



Autoclaveable and interchangeable Guide-cap



Interchangeable battery pack



RRP

[Request a Quote](#)



# Dr's Intraoral Camera

Wireless Autofocus Intraoral  
Camera with Mouse.

Wired

[Request a Quote](#)



**Auto Focus**

Can get clear image with auto focus function in oral cavity.



**HD image**

Can get high definition image without distortion.



**Gyro mouse built-in**

Useable as a mouse.

**Wireless Only**



**High Speed Digital Wireless**

High speed digital wireless provide more clear live image without interruption.



**Wireless Receiver**

Compact wireless receiver without any power supply.





\* GST All included

PRIME LINE



### PRIME LINE



RRP **AUD 1,595**

Coupling Connection	Power Head 25 Watt	Small Head 18 Watt
Kavo	HP21KL	HP22KL
NSK	HP21NL	HP22NL
W&H	HP21WL	HP22WL
Sirona	HP21SL	- N/A -

- AeroAcoustic blade
  - Glass rod fiber optics
  - Reverse flow protection
  - Automatic pressure regulation
  - Refined ceramic bearings
  - Scratch resistance Iconic Prime body
- 25 W** Powerful & Precise Power Head - 25W
- 55 dB** Incredibly Quiet Only 55 dB noise

**Now with 2 Years FairCare Warranty**  
Unconditional warranty except physical damage on Prime Line High-speeds

ECO LINE TURBINES



RRP **AUD 847 (F/Optic)**      RRP **AUD 627 (N/Optic)**

- 59 dB Operating Noise
- AeroPerformance blade
- Refined ceramic bearings
- Glass rod fiber optics
- Smooth Eco body

Coupling Connection	Power Head 24W (F/Optic)	Small Head 16W (F/Optic)
Kavo	HE21KL	HE22KL
NSK	HE21NL	HE22NL
W&H	HE21WL	HE22WL
Sirona	HE21SL	- N/A -

**Now with 1 year FairCare Warranty**  
Unconditional warranty except physical damage on Eco Line High-speeds

COUPLINGS



- ✓ MK-dent & Kavo with LED & water
- **QC6016KW** \$ 495.00

- ✓ Non-optic
- **QC4014K** \$ 296.00



- ✓ NSK connection with LED
- **QC6016NT** \$ 352.00

- ✓ Non-optic
- **QC4014NT** \$ 296.00



- ✓ W&H connection with fibre optic
- **QC5016W** \$ 385.00

- ✓ Non-optic
- **QC4014W** \$ 296.00



- ✓ Sirona connection with LED & water
- **QC6016SW** \$ 495.00

- ✓ Non-optic
- NA-



\* GST All included

PRIME LINE



### PRIME LINE



RRP **AUD 1,595**

Coupling Connection	Power Head 25 Watt	Small Head 18 Watt
Kavo	HP21KL	HP22KL
NSK	HP21NL	HP22NL
W&H	HP21WL	HP22WL
Sirona	HP21SL	- N/A -

- AeroAcoustic blade
  - Glass rod fiber optics
  - Reverse flow protection
  - Automatic pressure regulation
  - Refined ceramic bearings
  - Scratch resistance Iconic Prime body
- 25 W** Powerful & Precise Power Head - 25W
- 55 dB** Incredibly Quiet Only 55 dB noise

**Now with 2 Years FairCare Warranty**  
Unconditional warranty except physical damage on Prime Line High-speeds

ECO LINE TURBINES



RRP **AUD 847 (F/Optic)**      RRP **AUD 627 (N/Optic)**

- 59 dB Operating Noise
- AeroPerformance blade
- Refined ceramic bearings
- Glass rod fiber optics
- Smooth Eco body

Coupling Connection	Power Head 24W (F/Optic)	Small Head 16W (F/Optic)
Kavo	HE21KL	HE22KL
NSK	HE21NL	HE22NL
W&H	HE21WL	HE22WL
Sirona	HE21SL	- N/A -

**Now with 1 year FairCare Warranty**  
Unconditional warranty except physical damage on Eco Line High-speeds

COUPLINGS



✓ MK-dent & Kavo with LED & water

- QC6016KW \$495.00

✓ Non-optic

- QC4014K \$296.00



✓ NSK connection with LED

- QC6016NT \$352.00

✓ Non-optic

- QC4014NT \$296.00



✓ W&H connection with fibre optic

- QC5016W \$385.00

✓ Non-optic

- QC4014W \$296.00



✓ Sirona connection with LED & water

- QC6016SW \$495.00

✓ Non-optic

-NA-